



**THE EVENT VESSEL**

**HAMBURG // NORTH & BALTIC SEA**

# AHOY & WELCOME ABOARD!

Take charge of the helm on board our modern and unique MS KOI and turn the three decks into your own terrain. Christmas parties, conferences, corporate celebrations, public events – the MS KOI turns your function into an unforgettable experience on the open sea!



A vessel that offers a unique location – extraordinary, modern and exclusive. An event landscape spanning **three decks** that transports your guests into another dimension. The interior design is well thought-out, the furnishings are of high quality and the technology is state-of-the-art. Our versatility means we can adapt everything to suit your specific requirements. Another unique attribute is the MS KOI's operating area: She navigates the entire North Sea and Baltic Sea coast and can turn any port into her own. Always and everywhere.

The MS KOI's appeal is convincing and she offers a place away from the mainstream that can become your own terrain. Conferences, corporate celebrations, events in a class of their own – nothing is impossible. With a capacity of up to 550 people, versatile seating, mobile outdoor bars, various branding areas and catering opportunities, the vessel can be tailored to your specific event.



## WELCOME DECK

The spacious welcome deck offers your event the perfect start. Guest accreditation, welcome drink or sponsor wall – arrange the entrance area entirely in accordance with your requirements and ideas, and in so doing ensure that your guests, customers and partners enjoy a perfect reception. A large coatroom is also available adjacent to a welcome lounge with mobile seating. The deck features a separate lounge for up to 160 people with a wide range of applications.

- ✔ Spacious entrance area with welcome desk
- ✔ Separate lounge with large windows, versatile lighting design and 60" screen Party for 100 – 160 people | Sit-down dinner for up to 50 people | Theater-style seating for up to 78 people
- ✔ Welcome lounge with mobile seating
- ✔ 5 full HD flat screens (1 x 75", 2 x 60", 2 x 42") can be used for visuals
- ✔ Coatroom
- ✔ Small room with food elevator for catering (connected to galley and lounge deck)
- ✔ Restrooms (6 for ladies, 4 + urinal for gentlemen)
- ✔ Lighting design with flexible control options



## LOUNGE DECK

Thanks to various partitioning and color concepts, the lounge deck is a true all-rounder when it comes to event areas and can be freely arranged without any constraints. Let us know what you have in mind and we will provide you with an offer for seating, room planning and media setup that is tailored to your event.

- ✓ Main bar (with connected food elevator)
- ✓ Cocktail bar (with connected storage room)
- ✓ Capacity (versatile seating for up to 550 people)  
Party for 100 – 550 people | Sit-down dinner for 100 – 200 people |  
Buffet/walking dinner for 100 – 550 people | Theater-style seating for up to 109 people
- ✓ Conference technology (1 x 50" & 2 x 60" flat screens, radio microphone, sound system)
- ✓ Sound & lighting system, including DJ equipment (LED controller)
- ✓ 2 separate areas (each for 15 people) can be used as a VIP lounge with 1 x 42" & 1 x 50" flat screen each
- ✓ Yacht windows with integrated Chesterfield bench seating



## OPEN-AIR-DECKS I & II

Give your guests the opportunity to enjoy the fresh air and let their eyes wander over new horizons on the open sea. Barbecue buffets on the aft deck, summer cocktail receptions or dancing under the starry sky on the upper deck – this is where anything is possible. You alone determine the atmosphere.

- ✔ Open air decks I & II (aft & outer deck) connected with spacious stairway
- ✔ Open air deck I has more than 50 m<sup>2</sup> of open space (can be completely covered/enclosed with a tarpaulin, e.g. for use as a smoking area in the winter)
- ✔ Open air deck II has more than 200 m<sup>2</sup> of open space with observation deck
- ✔ Mobile outdoor bars
- ✔ Various temporary branding areas
- ✔ Mobile canopies, including sound and lighting systems
- ✔ Lounge furniture and bistro tables

# OPERATING AREAS

The MV KOI operates in Hamburg and on the entire North Sea and Baltic Sea coast and can turn any port into her own. Always and everywhere.



## NORTH SEA

Sylt  
Amrum  
Föhr  
Husum  
Tönning  
St. Peter-Ording  
Büsum  
Hamburg  
Cuxhaven  
Bremerhaven  
Bremen  
Oldenburg  
Willhelmshaven  
Norderney  
Borkum  
Emden  
Leer  
Papenburg

## BALTIC SEA

Flensburg  
Schleswig  
Kappeln  
Damp  
Eckernförde  
Kiel  
Burg/Fehmarn  
Scharbeutz  
Timmendorfer Strand  
Lübeck  
Travemünde  
Kühlungsborn  
Boltenhagen  
Wismar  
Warnemünde  
Rostock  
Stralsund  
Greifswald  
Rügen  
Usedom

## INTERNATIONAL

Poland  
Sweden  
Denmark  
The Netherlands

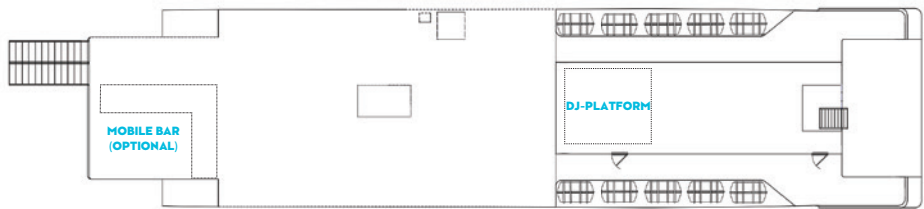
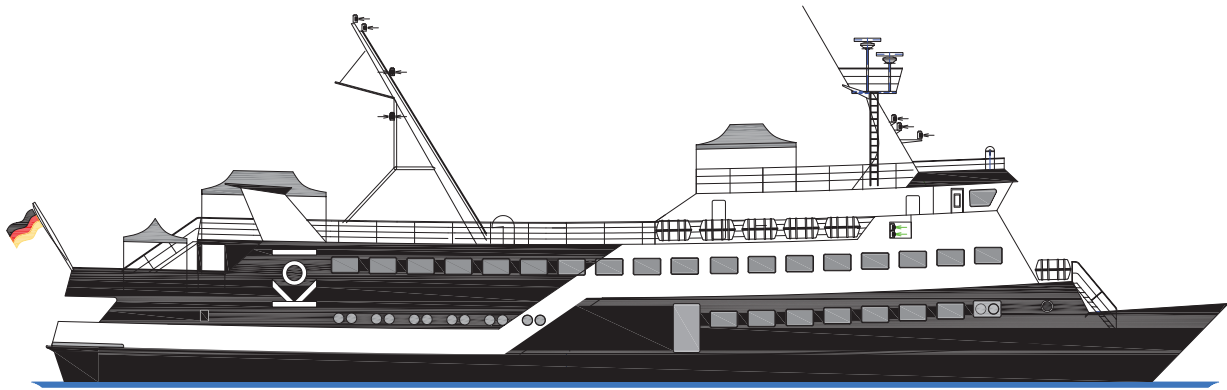
... and many more!



## THE MS KOI IN FIGURES

✔ Year built	1980 // completely modernized in 2014
✔ Length	53,60 m
✔ Breadth	10,10 m
✔ Draft	2,15 m
✔ Speed	13,20 kn
✔ Power	2 x 695 kW
✔ Passengers	up to 550 people

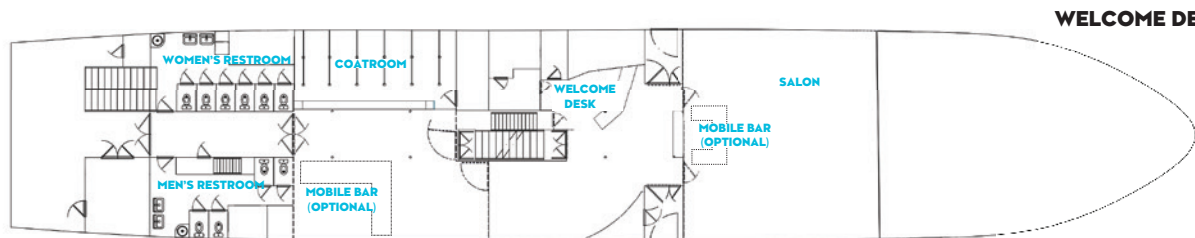




**OPEN-AIR-DECK**



**LOUNGE DECK**



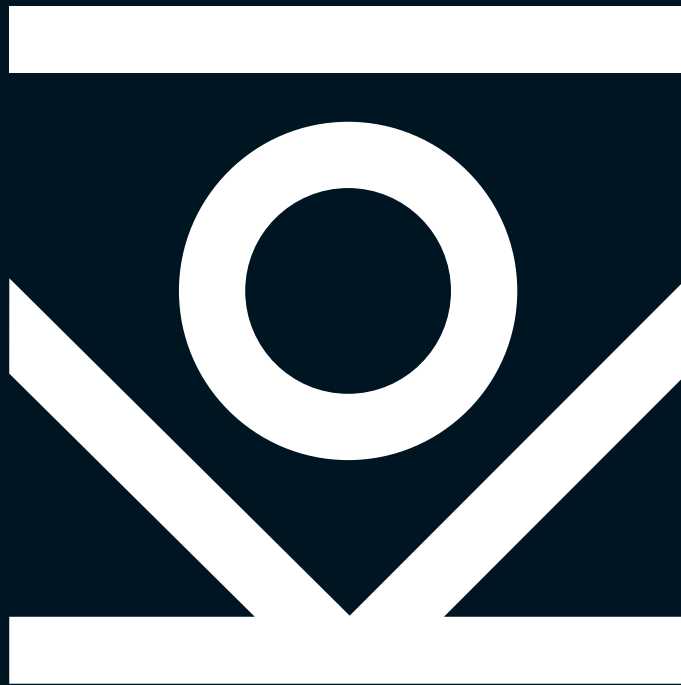
**WELCOME DECK**



Permanently installed seating



# DECK PLAN



**MS KOI**

**[www.ms-koi.de](http://www.ms-koi.de)**

Adler-Schiffe GmbH & Co. KG  
Boysenstraße 13 | 25980 Sylt/Westerland  
info@ms-koi.de | Phone +49 (0) 46 51 - 98 70 836